

***Dependable
High-Performance
Pipeline Equipment
Solutions***

PIPEMASTER[®]
PFM Series Pipe Facing Machines

Tri Tool's pipeline equipment is establishing new standards for portable pipe facing machines in terms of both speed and precision results. Field proven, Tri Tool PFM machines have been utilized on the Mardi-Gras, Thunderhorse, Atlantis, and Kizomba projects.

Model PFM 1632
ID Mounted Pipe Facing Machine

The Model PFM 1632 is a portable ID mount machine for beveling and facing 16" through 32" pipe. This high performance machine is the fastest in the industry, delivering complete bevels in under 2 minutes on 1.5" wall pipe.

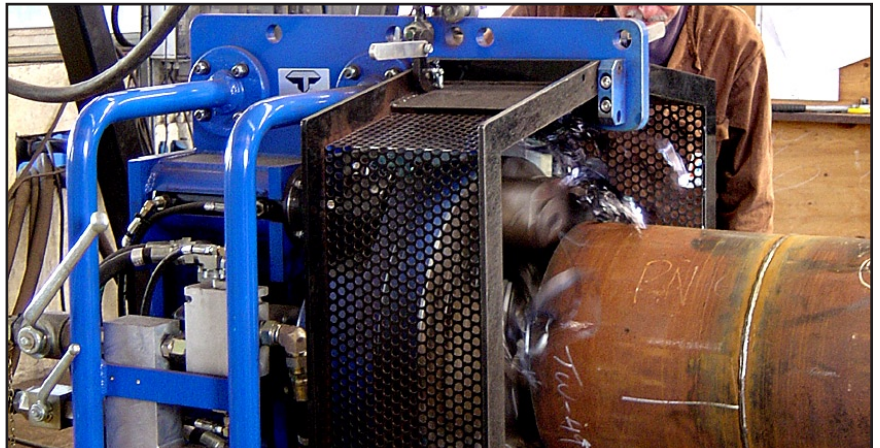
- Widest pipe size range in the industry
- Up to 1.85" (47mm) wall thickness
- Most powerful machine in its class
- Safety chip guard with integral auto shutoff



Model PFM 816
ID Mounted Pipe Facing Machine

The Model PFM 816 is a portable ID mount machine for beveling and facing 8" through 16" pipe. The tool is configured with twin hydraulic motors powering a set of helical gears to drive the main spindle for smooth power.

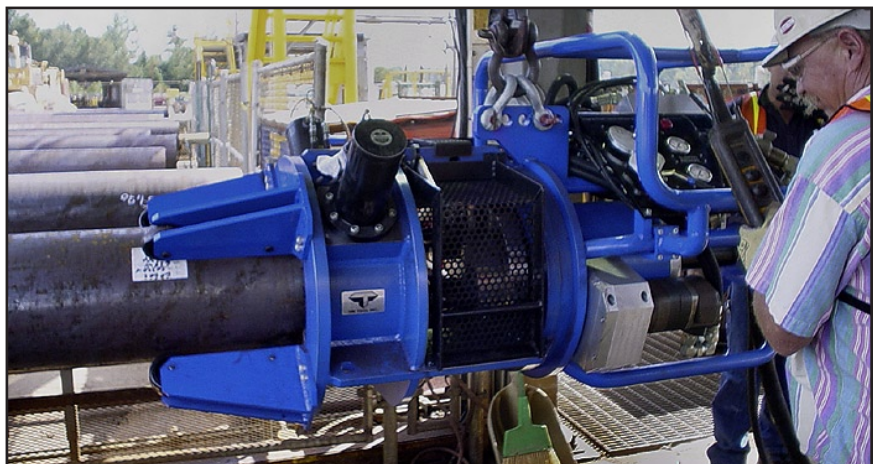
- Four ID tracking radial arms
- Up to 1.60" (40.6mm) wall thickness
- Most powerful in its class
- Safety chip guard with integral auto shutoff



Model PFM 612
OD Mounted Pipe Facing Machine

The Model PFM 612 is a portable OD mount machine for beveling and facing 6" through 12" pipe. An optional kit is available that allows beveling on 4" pipe. Production cycle times from prep to prep of under one minute can be achieved with this high RPM facing machine.

- Up to 2.48" (63mm) wall thickness
- Optional Short-Perch length mounting for collars and coating cut-backs
- Safety chip guard with integral auto shutoff



TRI TOOL INC.

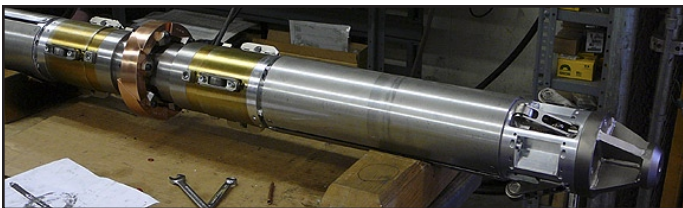
Equipment for a wide range of pipe and pipeline solutions...



Deep Counterbore System

The Deep Counterbore System utilizes the dependable 600 Series Clamshell platform to generate accurate deep counterbores, critical for SCR quality fit-ups. This auto-feed system is powered by a high speed hydraulic motor.

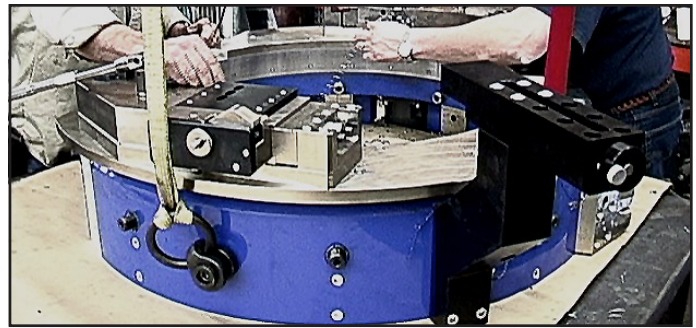
- Produces high quality surface finish in 1 step
- Most accurate deep counterborer available
- Consistent RMS 125 finishes while holding .010 tolerance on taper at 8" deep



ILUC **CLAMPMASTER**

Series of Internal Line Up Clamps

The ILUC clamp series was developed to provide internal line up for welding of small-bore piping systems. This modular system allows for different configurations to fit a wide variety of applications. Available options include copper backing for root pass integrity, purge dams for TIG welding, and a pneumatic drive system for horizontal operations. For vertical use, an emergency brake system is actuated on loss of pneumatic pressure or electrical current preventing the clamp from dropping into the pipeline.



HSS

OD Mounted High Speed Severing System

The HSS Series machines are OD mounted split frame lathes for high speed severing of in-line pipe on offshore weld cut-outs. Based on the rugged 600 series Clamshell platform, the unit features OD tracking for out-of-round conditions, and has an optional template tracer.



WPS

OD Mounted Weld Profiling System

The Model WPS is a portable OD mount machine for Weld Crown Removal that strengthens the weld and produces a smooth surface for X-ray and A.U.T. testing. Unit can also be configured for internal surfacing when required.



HPU 7560/5 Hydraulic Power Unit

A heavy-duty, dual-pump (60 GPM and 5GPM), pressure compensated hydraulic supply designed specifically to provide power for the Tri Tool PFM Series equipment. The 5GPM pump (at 2000 psi) is for the feed and the clamping power and the 60 GPM pump is for the cutting head drive. The HPU 7560/5 is pendant controlled (up to 50 ft. away) and is skid mounted for portability on the work site.



TRI TOOL INC.

3041 Sunrise Blvd., Rancho Cordova, CA 95742
888-TRITool • (916) 288-6100 • Fax (916) 288-6160
www.tritool.com

© Copyright Tri Tool Inc. All rights reserved.
Printed in the USA PN-0 [0208]